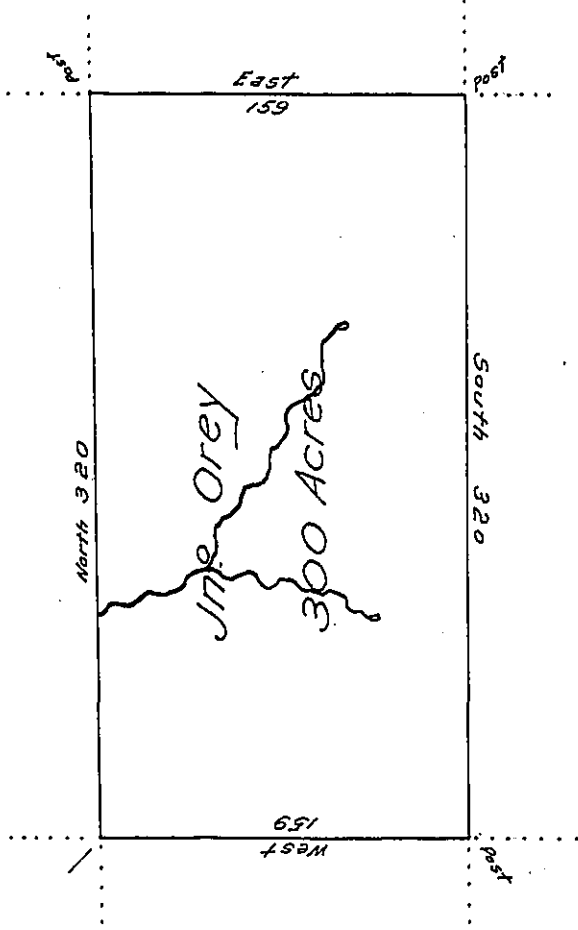


FORM No. 1.

Jn^o Nolder

Thomas McClelland



Wm McClelland

Adlum's surveys

Surveyd for the Use of John Orey on the Sixth Day
of December 1794 The Above Described Tract of Land Con-
taining Three Hundred Acres With the Allowance of Six Per Cent
for Roads & C Situate on the Waters of French & Sandy Creek
N: West of Alligene Including his Improvermt began in the
Month of March 1794 District N^o 3

Ben Stokely D.S.

IN TESTIMONY that the above is a copy of the original remaining on file in
the Department of Internal Affairs of Pennsylvania, made
conformably to an Act of Assembly approved the 16th day of
February, 1833, I have hereunto set my Hand and caused
the Seal of said Department to be affixed at Harrisburg,
this twenty-ninth day of September 1906.

Giaco R Brown
Secretary of Internal Affairs.